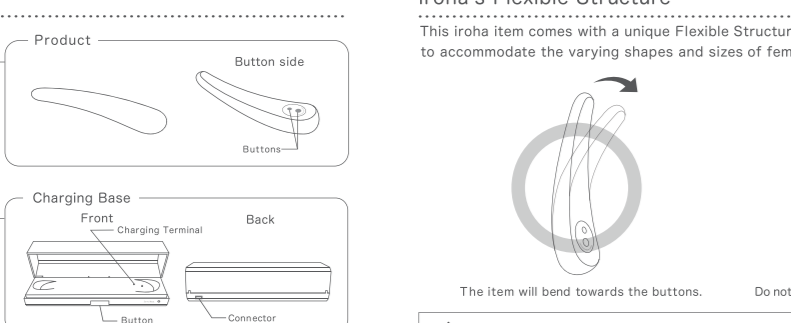


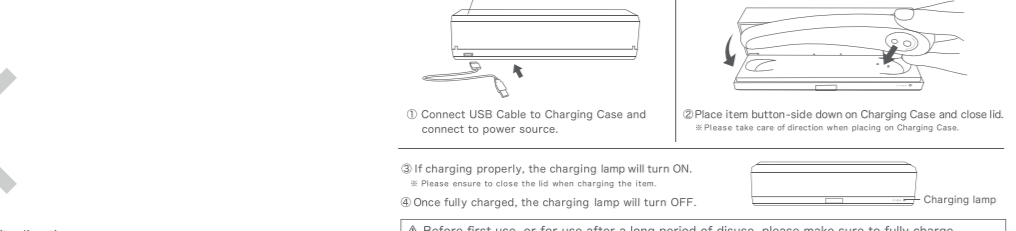
## Product Contents



※ Product Pictured : "MIKAZUKI"

## iroha's Flexible Structure

This iroha item comes with a unique Flexible Structure to allow the item to gently bend to accommodate the varying shapes and sizes of female pleasure zones.



The item will bend towards the buttons. Do not bend in the opposite direction.

⚠ Please do not use excessive force on the item - this may damage the product.

## Charging



- Connect USB Cable to Charging Case and connect to power source.
- Place item button-side down on Charging Case and close lid. Please take care of direction when placing on Charging Case.

- If charging properly, the charging lamp will turn ON. Please ensure to close the lid when charging the item.
- Once fully charged, the charging lamp will turn OFF.

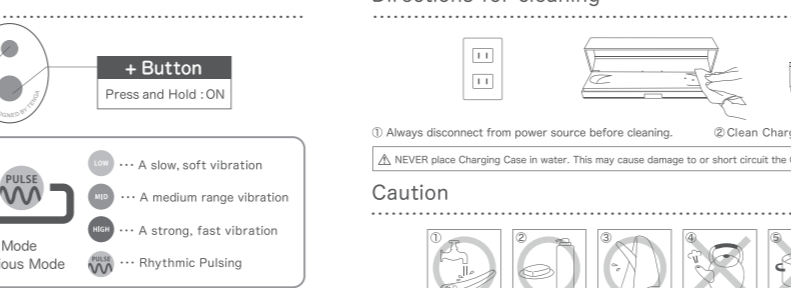
⚠ Before first use, or for use after a long period of disuse, please make sure to fully charge.

⚠ To sustain battery life as long as possible, please recharge to full charge at least every half a year.

※ AC Adapter not included. ※ Please use a 5V, 1A adapter.

※ Ensure your computer or AC adapter is compatible with this product before attempting to charge.

## Charging Case



Press button and open.

⚠ Please do not use excessive force when opening the case - this may damage the case.

## Directions for use

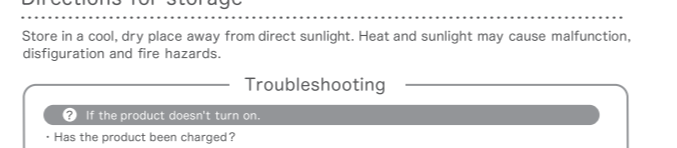


- Press + Button once to switch to next Mode
- Press - Button once to switch to previous Mode

⚠ ALWAYS use water-based lubricant.

⚠ Silicone-based /oil-based lubricants / other oils such as massage oil or baby oil may cause damage to the product material.

## Directions for cleaning



- Always disconnect from power source before cleaning.
- Clean Charging Case with damp cloth.

⚠ NEVER place Charging Case in water. This may cause damage to or short circuit the Charging Base, or cause a fire hazard.

- Please wash with cold or tepid water.
- For extra cleaning please use a mild soap.
- Dry with towel.
- Do not clean with hot water.
- Do not place in hot or cold water for extended periods of time.
- Do not clean with alcohol or highly acidic/alkaline cleaners. This may cause discoloration of product.

⚠ This is NOT a medical device.

⚠ This is NOT a children's toy. Please keep out of reach of children.

⚠ ALWAYS use water-based lubricant.

⚠ Please store in a cool, dry place away from direct sunlight.

⚠ DO NOT plug in any device with wet hands.

⚠ DO NOT use under blankets or other sealed areas, or any place with high temperatures and humidity to prevent the risk of overheating and possible fire hazards, electric hazards or injury.

⚠ Please occasionally remove dust from USB Plug and USB Cable, as excessive build-up of dust in these areas may cause a fire hazard.

## Directions for storage

Store in a cool, dry place away from direct sunlight. Heat and sunlight may cause malfunction, discoloration and fire hazards.

- If the product doesn't turn on.
  - Has the product been charged?
  - Is the USB Cable properly connected to both Charging Case and power source?
- If the product stops working even after charging.
  - Has the product been charged properly?
  - Please deplete the battery completely until the product stops, and fully charge. There may be occasions when doing this multiple times will solve the problem.
  - If the problem persists, it may be that the battery life has ended.
- If the product won't charge.
  - Note that charging will begin only once the Charging Case lid has been closed.
  - Is the USB Cable properly connected to both Charging Case and power source?
  - Is the product placed properly (facing the correct direction) on the Charging Case?

⚠ This product is not designed for use by those with physical or mental disabilities. Persons in such conditions should consult a medical professional or a person responsible for their safety before use.

⚠ DO NOT use product on upper neck or head.

⚠ DO NOT use product on or make contact with eyes or eyelids.

⚠ If you feel unwell during use of product, please stop use immediately and seek medical attention.

## Product Specifications

● Product	
Product Name and Product Code	iroha Pleasure Item for Women MIKAZUKI / hmf-01 - MINAMO / hmf-02
Recharging Time Approx. 120 minutes	
Continuous Running Time Approx. 90 minutes	
Dimensions / Weight	MIKAZUKI : Approx L172 x W38 x H27 mm / Approx 110 g MINAMO : Approx L172 x W38 x H28.5 mm / Approx 120 g
Materials	Product: Silicone, ABS, PC, Lithium-ion Battery Charging Case: ABS
● USB Cable	
USB Cable Length	Waterproof up to 50cm 1.2m
Country of manufacture	China

English 7-8

## Safety Instructions

Thank you for purchasing an iroha brand product. For the safe and long-term use of this product please read all instructions carefully and store this manual in a safe place. ALWAYS use in accordance to the following instructions. TENGA Co., Ltd. can not be held liable for any use outside of that stated in this user manual.

- DO NOT drop or expose to extreme force as this may cause damage.
- DO NOT place heavy items on top of, nor place hot items near all items.
- DO NOT place any other metal items on the Charging Case.
- Please do not use on or near open flames or in extreme heat conditions.
- DO NOT leave product unattended when product is switched ON.
- ALWAYS turn product OFF after use.
- DO NOT leave the product submerged in water after cleaning.
- DO NOT wet the Charging Case.
- DO NOT use the Charging Case.
- ALWAYS disconnect the cable from power source when cleaning.
- ALWAYS disconnect the cable from power source when not in use.
- DO NOT pull cable to unplug from Charging Case or power source - ALWAYS pull while holding cable end.
- DO NOT excessively bend or pull USB Cable or wrap it around the Charging Case.
- DO NOT share this item with others to avoid transmission of disease or the passing of pathogens.
- DO NOT use on one spot of the body for over 15 minutes.
- DO NOT use if in the following conditions for health concerns:
  - Under the influence of alcohol.
  - Under extreme stress or tiredness.
- ALWAYS place product on Charging Case facing correct direction.
- This product is not designed for use by those with physical or mental disabilities. Persons in such conditions should consult a medical professional or a person responsible for their safety before use.
- DO NOT use product on upper neck or head.
- DO NOT use product on or make contact with eyes or eyelids.
- If you feel unwell during use of product, please stop use immediately and seek medical attention.

⚠ NEVER place Charging Case in water. This may cause damage to or short circuit the Charging Base, or cause a fire hazard.

⚠ To avoid risk of injury, dangerous electric shock, burns or fire hazards before, during and after use, as well as malfunction of product.

This is product is intended for use to assist massage of body or stimulate erogenous zones, DO NOT use for any other purpose or in any other manner than that stated within this user manual.

⚠ This is NOT a medical device.

⚠ This is NOT a children's toy. Please keep out of reach of children.

⚠ ALWAYS use water-based lubricant.

⚠ Please store in a cool, dry place away from direct sunlight.

⚠ DO NOT plug in any device with wet hands.

⚠ DO NOT use under blankets or other sealed areas, or any place with high temperatures and humidity to prevent the risk of overheating and possible fire hazards, electric hazards or injury.

⚠ Please occasionally remove dust from USB Plug and USB Cable, as excessive build-up of dust in these areas may cause a fire hazard.

⚠ If you feel unwell during use of product, please stop use immediately and seek medical attention.

## Directions for storage

Store in a cool, dry place away from direct sunlight. Heat and sunlight may cause malfunction, discoloration and fire hazards.

- If the product doesn't turn on.
  - Has the product been charged?
  - Is the USB Cable properly connected to both Charging Case and power source?
- If the product stops working even after charging.
  - Has the product been charged properly?
  - Please deplete the battery completely until the product stops, and fully charge. There may be occasions when doing this multiple times will solve the problem.
  - If the problem persists, it may be that the battery life has ended.
- If the product won't charge.
  - Note that charging will begin only once the Charging Case lid has been closed.
  - Is the USB Cable properly connected to both Charging Case and power source?
  - Is the product placed properly (facing the correct direction) on the Charging Case?

⚠ This product is not designed for use by those with physical or mental disabilities. Persons in such conditions should consult a medical professional or a person responsible for their safety before use.

⚠ DO NOT use product on upper neck or head.

⚠ DO NOT use product on or make contact with eyes or eyelids.

⚠ If you feel unwell during use of product, please stop use immediately and seek medical attention.

## Product Warranty

This product is covered by Product Warranty for ONE (1) YEAR from Original Date of Purchase against defects due to fault of production or materials. If you discover a defect during Product Warranty period, TENGA Co., Ltd. will provide a replacement, free of charge, at its discretion. Product Warranty covers working parts of the Product and does NOT cover the following:

- If you fail to show both this User Manual and Original Purchase Receipt.
- Abnormal usage methods, or usage methods deemed inappropriate or otherwise mentioned as invalidating Warranty in this User Manual.
- Damages made during delivery of product, moving of product or accidental damages.
- Damages caused by natural disasters or use at wrong voltage.
- Cosmetic damage due to fair use of Product.

⚠ This product is not designed for use by those with physical or mental disabilities. Persons in such conditions should consult a medical professional or a person responsible for their safety before use.

⚠ DO NOT use product on upper neck or head.

⚠ DO NOT use product on or make contact with eyes or eyelids.

⚠ If you feel unwell during use of product, please stop use immediately and seek medical attention.

## Regarding Disposal

Regarding disposal of Waste Electrical and Electronic Equipment (WEEE). The symbol below of a crossed-out dustbin indicates that this item should be taken to an appropriate collection point for proper disposal. Please do not dispose with household waste.

⚠ Please attach Receipt of Original Purchase.

Contact : global@tenga.co.jp

## ONE YEAR PRODUCT WARRANTY

Full Name:	
Address:	
Telephone Number:	
WARRANTY PERIOD ONE (1) YEAR	
Date of Original Purchase	
Purchase Location (Store Name & Address or URL)	

⚠ Please attach Receipt of Original Purchase.

Contact : global@tenga.co.jp

## Directions for cleaning



- Always disconnect from power source before cleaning.
- Clean Charging Case with damp cloth.

⚠ NEVER place Charging Case in water. This may cause damage to or short circuit the Charging Base, or cause a fire hazard.

⚠ This product is not designed for use by those with physical or mental disabilities. Persons in such conditions should consult a medical professional or a person responsible for their safety before use.

⚠ DO NOT use product on upper neck or head.

⚠ DO NOT use product on or make contact with eyes or eyelids.

⚠ If you feel unwell during use of product, please stop use immediately and seek medical attention.